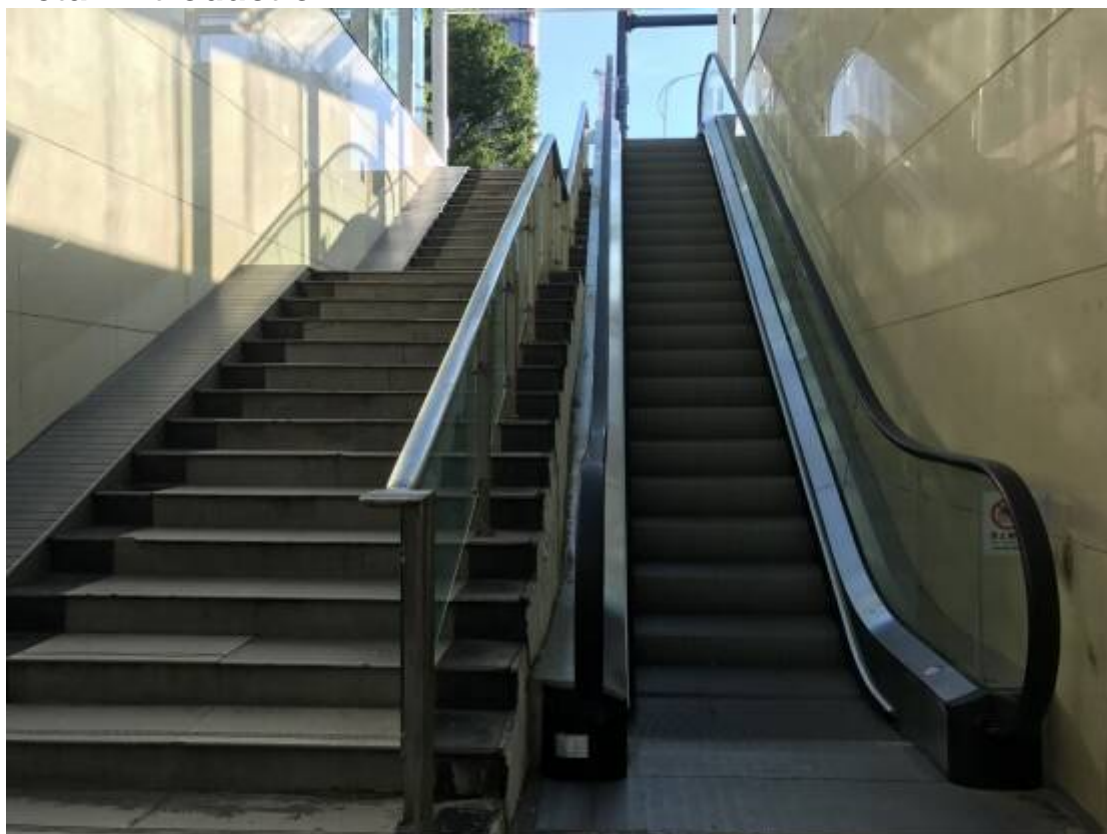


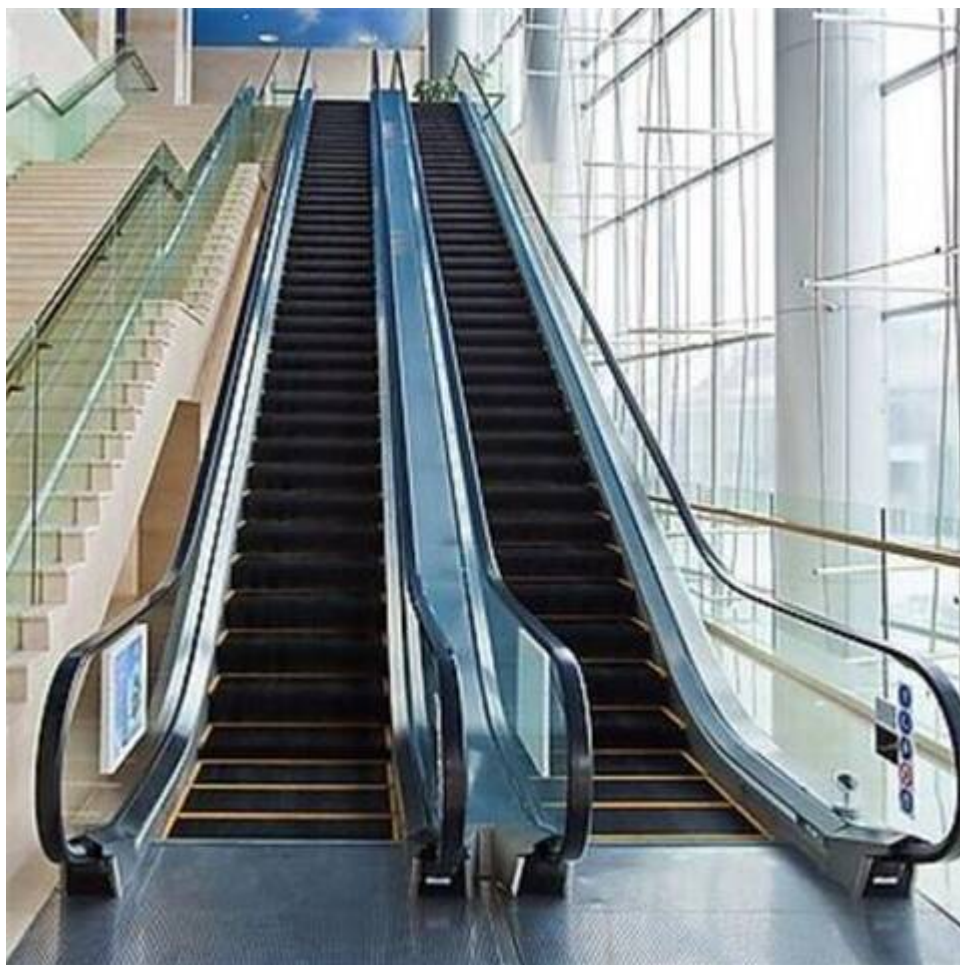
LSE Commercial Escalator 35 Angle Stainless Steel Steps 800mm VVVF Control

Specifications :

Price	Contact Us
Brand Name	LSE
Min.Order Quantity	1 set
Payment Terms	T/T, L/C, Western Union, etc.
Supply Ability	1000
Delivery Detail	10-25 working days.

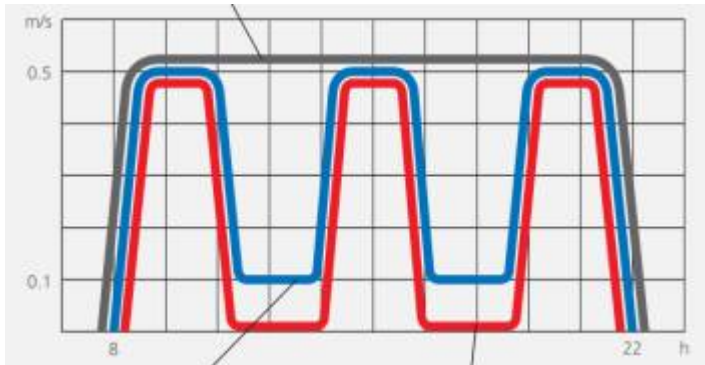
Detail Introduction :





Sistema de control





Standard configuration: power frequency operation

Optional configuration: high and low speed frequency conversion

Automatic start frequency conversion

Traction machine



Characteristics: Specific motor for escalator. Powerful, reliable, and high-performance.

Indoor protection level: IP21 ? IP44

Outdoor protection level: IP55

Worm gear

Smooth tooth surface structure

noise and vibration reduction

Location ? In the upper head

Railing



Commercial stairs use heavy duty fire retardant antibacterial handrails.

With the breaking force not less than 25 kN

Handrail material: synthetic rubber

Anti-aging agent

Daily cleaning

Technical data

Mechanic stairs	Indoor and outdoor
Height	H?30000mm
Angle	30°, 35°
Speed	0.45m/s, 0.5m/s
Steps	2 pasos, 3 pasos
Step materials	Stainless steel, Aluminum (standard for exterior)
Step width	600mm, 800mm, 1000mm
Escalator width	1240mm, 1440mm, 1640mm for 35 tilt
Capacity (people / h)	6000, 9000
Railings	Tempered glass (10mm), vertical to the armor
Railing Height	900mm, 1000mm (option)
Balustrade bracket	Stainless steel
Handrail	Type C, black (red, blue, gray)
Handrail drive	Big friction wheel
Power supply	Motor power: 380V ± 7%, 50Hz, three phase
	Lighting power: 220V, 50Hz, single phase
Control system	Std.(Star delta)
Energy saving function	Auto Restart, from stop to high speed
	Low speed VF photoelectricity, speed from low to high
	VVVF reset, stopped from low to high
Rung chain	Built-in roller
Tracking radius	1500/1000mm
Truss	Square tube
Standard	GB16899-2011
	CE, EN115-2008(2010A+)

Frequently asked questions

1. Price

Re: Send us an inquiry by mail, we will reply to you within 24 hours. It is more convenient and appreciated for us if you provide your company details and detailed elevator inquiry.

2. Payment term

Re: T / T

3. Installation and maintenance

Re: We will send the installation and maintenance manual together with the elevator.

Our question is to hire professional local company for installation and future maintenance, Once you need our technical assistant, feel free to contact us by mail or phone.

A technician will be dispatched to the job site if necessary.

4. Shipping conditions and price

Re: Both FOB / CIF / CFR price terms are ok, we have a reliable carrier to help arrange shipment for you. send your message to this provider.

The photos of the escalator factory



