

China made glass cabin elevator with high quality and good service

Specifications :

Price	Contact Us
Brand Name	LSE
Min.Order Quantity	1 set
Payment Terms	T/T, L/C, Western Union, etc.
Supply Ability	1000
Delivery Detail	10-25 working days.

Detail Introduction :

(Product Details)

Panoramic elevator

Capacity: 450kg to 2000kg

Speed: 1m / s to 2.5m / s

Motor: Gearless Traction Machine

Control: STEP or Monarch with VVVF

Gate Operator: VVVF

Warranty: One and a half years

Opening: By center or side

Maneuvering control with machine room



1.Intelligent control system

The control system adopts special VVVF system and complete computer design modular structure to ensure efficient, comfortable and safe operation of the elevator.

2. Advanced technology

All control boards, frequency converters and displays are independently developed and have 106 patents. 32-bit dual microcomputer integrated control is adopted Debugging is simple and can be remotely debugging Automatically learn the encoder angle after a Power outage or fault recovery OMU handheld update Application debugging

3. Reliable quality

After more than 100 strict tests before leaving the factory, the product failure rate is less than 0.3%. 8

elevators can be controlled All passed strict environmental, electronic, mechanical and EMC test.
Motor



1.Silent brake

Adopting a silent brake reduces noise by 5 ~ 10 (dB) A,
makes it a stable and high safety silent motor



2.Magnetic steel with good quality

Mature technology, stable structure, thermosetting up to 180 ? degrees, keeping permanent magnetic
up to 30 years



3.High precision encoder

The adoption of Heidenhain rotary encoder achieves high precision control, keeps the elevator
running under perfect speed curve, and ensures comfortable operating experiences.

Cabin



LSE-CAP08

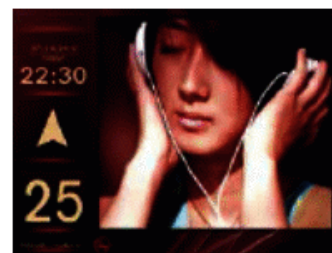
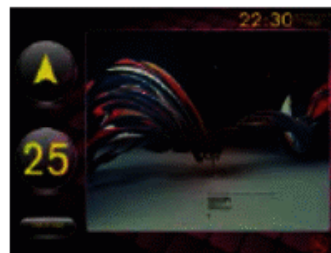
Ceiling: stainless steel + LED

Cabin: painted steel + glass

Handrail: stainless steel

Floor: PVC

10.4 ? / 12.1 ? / 15 ? LCD — TFT Display cockpit keypad



Keypads



years old



LSE-PS01 Stainless steel



The boarding video

Frequently asked questions

1. Price

Re: Send us an inquiry by mail, we will reply to you within 24 hours. It is more convenient and appreciated for us if you provide your company details and detailed elevator inquiry.

2. Payment term

Re: T / T

3. Installation and maintenance

Re: We will send the installation and maintenance manual together with the elevator.

Our question is to hire professional local company for installation and future maintenance,

Once you need our technical assistant, feel free to contact us by mail or phone.

A technician will be dispatched to the job site if necessary.

4. Shipping conditions and price

Re: Both FOB / CIF / CFR price terms are ok, we have a reliable carrier to help arrange shipment for you.

send your message to this provider.