

Passenger Elevator With Stainless Steel Cab Machine Room

Specifications :

Price	Contact Us
Brand Name	LSE
Min.Order Quantity	1 set
Payment Terms	T/T, L/C, Western Union, etc.
Delivery Detail	10-25 working days.
Keyword	Passenger elevator

Detail Introduction :

(Product Details)

Passenger elevator with machine room.

Capacity: 450kg up to 2000kg

Speed: 1m/s up to 4m/s

Motor: Gearless traction machine.

Control: STEP or Monarch with VVVF

Door Operator: VVVF

Warranty: One and a half year

Opening: Center or side opening

Cards + QR Code



The card system can use both tarjetas and QR Code.

Cards



Passengers do not need to pick up the buttons.

QR Code



Just use the cards or distinguish the QR Code with the cell phone.

Sensor button



The hand does not need to hold the button. The hand is on top of the button, it will work. Avoid infection with bacteria and virus.

Control maneuvering with machine room



1. Intelligent control system

The control system adopts special VVVF system and modular structure of complete computer design to ensure efficient, convenient and safe operation of the elevator.

2. Advanced technology

All control boards, frequency converters and displays are independently developed and have 106 patents. 32-bit dual microcomputer integrated control is adopted. Debugging is simple and can be debugged remotely. Automatically learn the encoder angle after power failure or fault recovery.

Updating of OMUD handheld equipment. Application debugging.

3. Reliable quality

After more than 100 strict tests before leaving factory, the product failure rate is less than 0.3%. 8 elevators can be controlled. All passed strict environmental, electronic, mechanical and EMC test.



1. Silent brake

Adopting a silent brake reduces the noise of 5 ~ 10 (dB) A, makes it a stable and high safety silent motor.



2. Magnetic steel with good quality.

Mature technology, stable structure, thermostable up to 180 ° degrees, keeping permanent magnetic up to 30 years.



3. High precision encoder

The adoption of Heidenhain rotary encoder achieves high precision control, keeps the elevator running under a perfect speed curve and guarantees smooth running experiences.

Cabin



LSE-CA24

Ceiling: stainless steel + acrylic

Bottom: stainless steel + stainless steel strip + stainless steel mirror

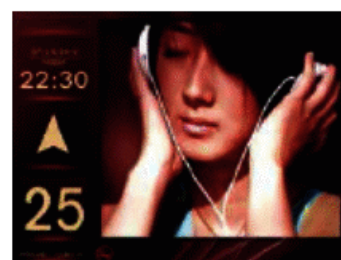
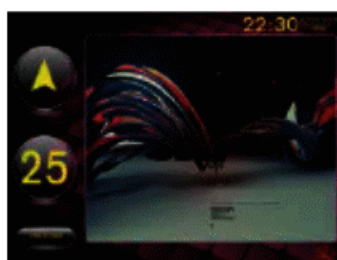
Side walls: stainless steel + stainless steel + stainless steel strip + stainless steel mirror

Handrail: Stainless steel mirror

Floor: PVC

Recommended front walls: stainless steel

10.4"/12.1"/15" LCD-TFT Cockpit button panel display



Button panels



Handrails



LSE-PS01 Stainless steel



FAQ

1. Price

Re: send us an inquiry by mail , we will reply you within 24 hours. It is more convenient and appreciated for us if you provide your company details and detailed inquiry for elevators.

2. Payment term

Re: T/T

3. Installation and maintenance

Re: We will send the installation and maintenance manual together with the elevator. Our question is to hire a professional local company for installation and future maintenance. Once you need our

technical assistant, please feel free to contact us by mail or phone. A technician will be sent to the job site if necessary.

4. Shipping terms and price

Re: Both FOB / CIF / CFR price terms are available, we have a reliable forwarder to help arrange the shipment for you. Send your message to this supplier.

Translated with www.DeepL.com/Translator (free version)